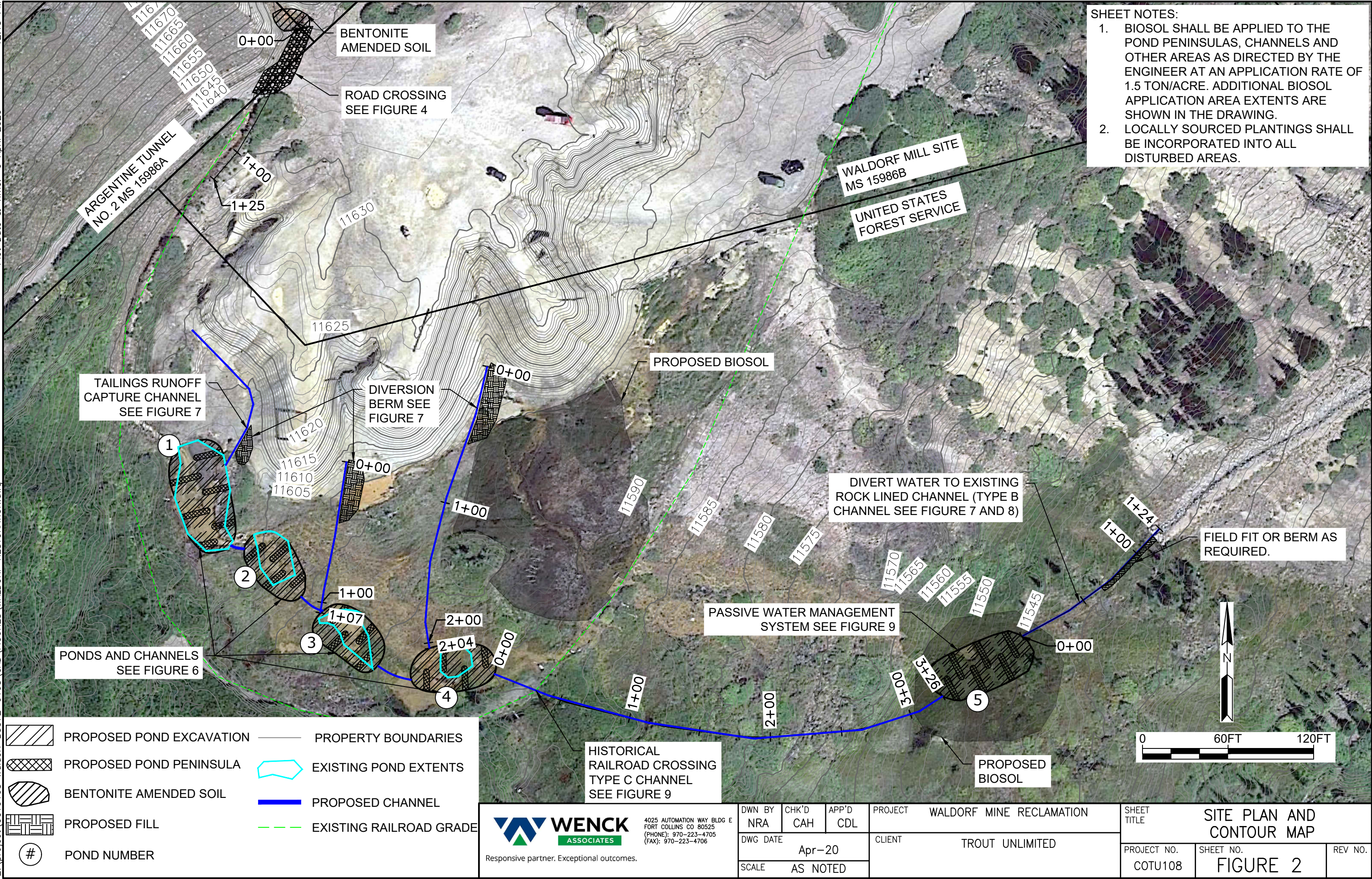
 Responsive partner. Exceptional outcomes.	4025 AUTOMATION WAY BLDG E FORT COLLINS CO 80525 (PHONE): 970-223-4705 (FAX): 970-223-4706			DWN BY NRA	CHK'D CAH	APP'D CDL	PROJECT WALDORF MINE RECLAMATION	SHEET TITLE SITE LOCATION MAP		
	DWG DATE Mar-20  SCALE AS NOTED			CLIENT TROUT UNLIMITED			PROJECT NO. COTU108		SHEET NO. FIGURE 1	REV NO.



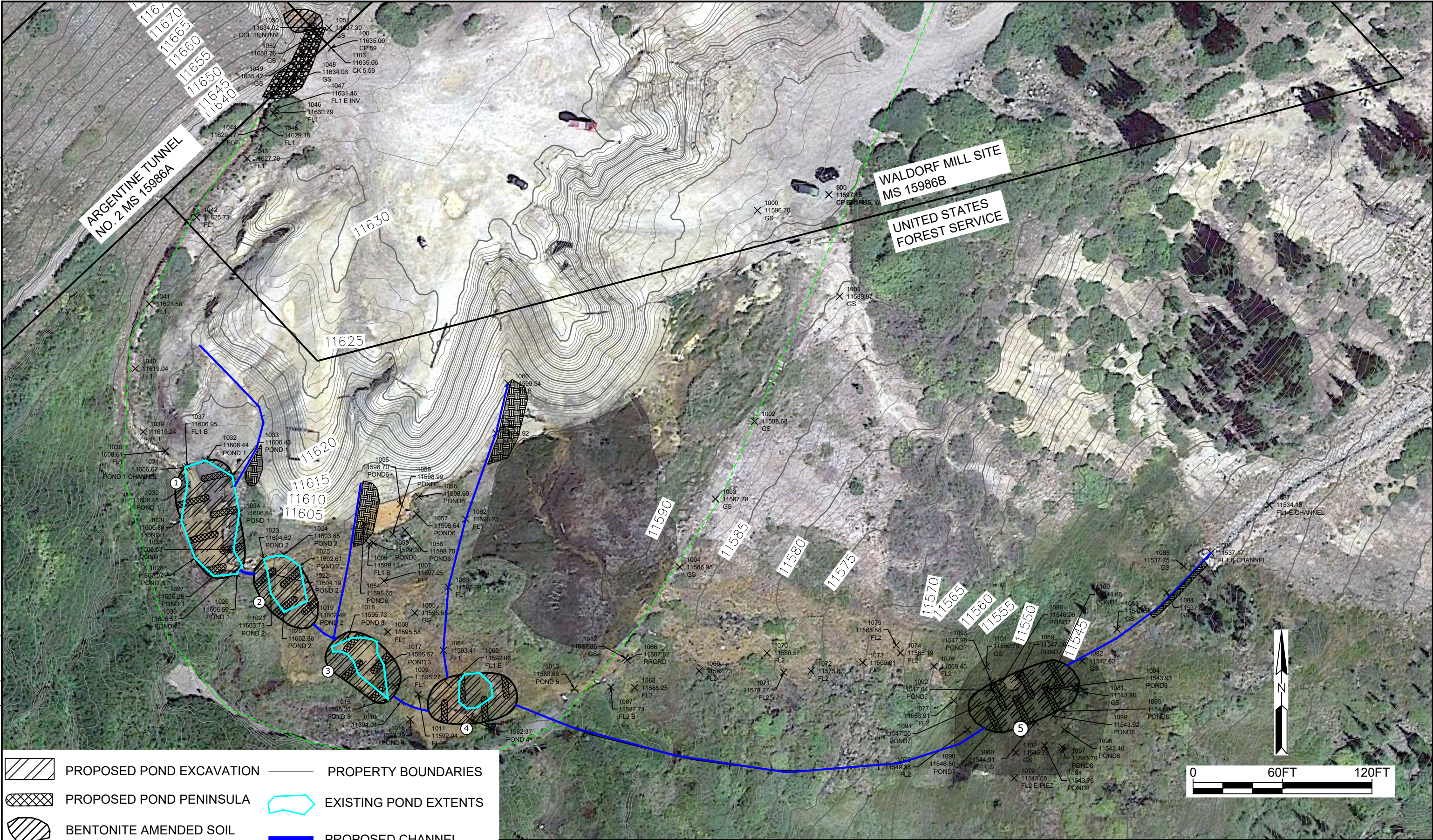
12:15 PM  
Plot Date & Time: 9 April 2020  
Z:\project\COTU108 Waldorf B5572-0108\CAD\FIGURES\WALDORF RESTORATION.dwg




- SHEET NOTES:**
1. BIOSOL SHALL BE APPLIED TO THE POND PENINSULAS, CHANNELS AND OTHER AREAS AS DIRECTED BY THE ENGINEER AT AN APPLICATION RATE OF 1.5 TON/ACRE. ADDITIONAL BIOSOL APPLICATION AREA EXTENTS ARE SHOWN IN THE DRAWING.
  2. LOCALLY SOURCED PLANTINGS SHALL BE INCORPORATED INTO ALL DISTURBED AREAS.



12:15 PM  
Plot Date & Time: 9 April 2020  
Z:\project\COTU108 Waldorf B5572-0108\CAD\FIGURES\WALDORF RESTORATION.dwg

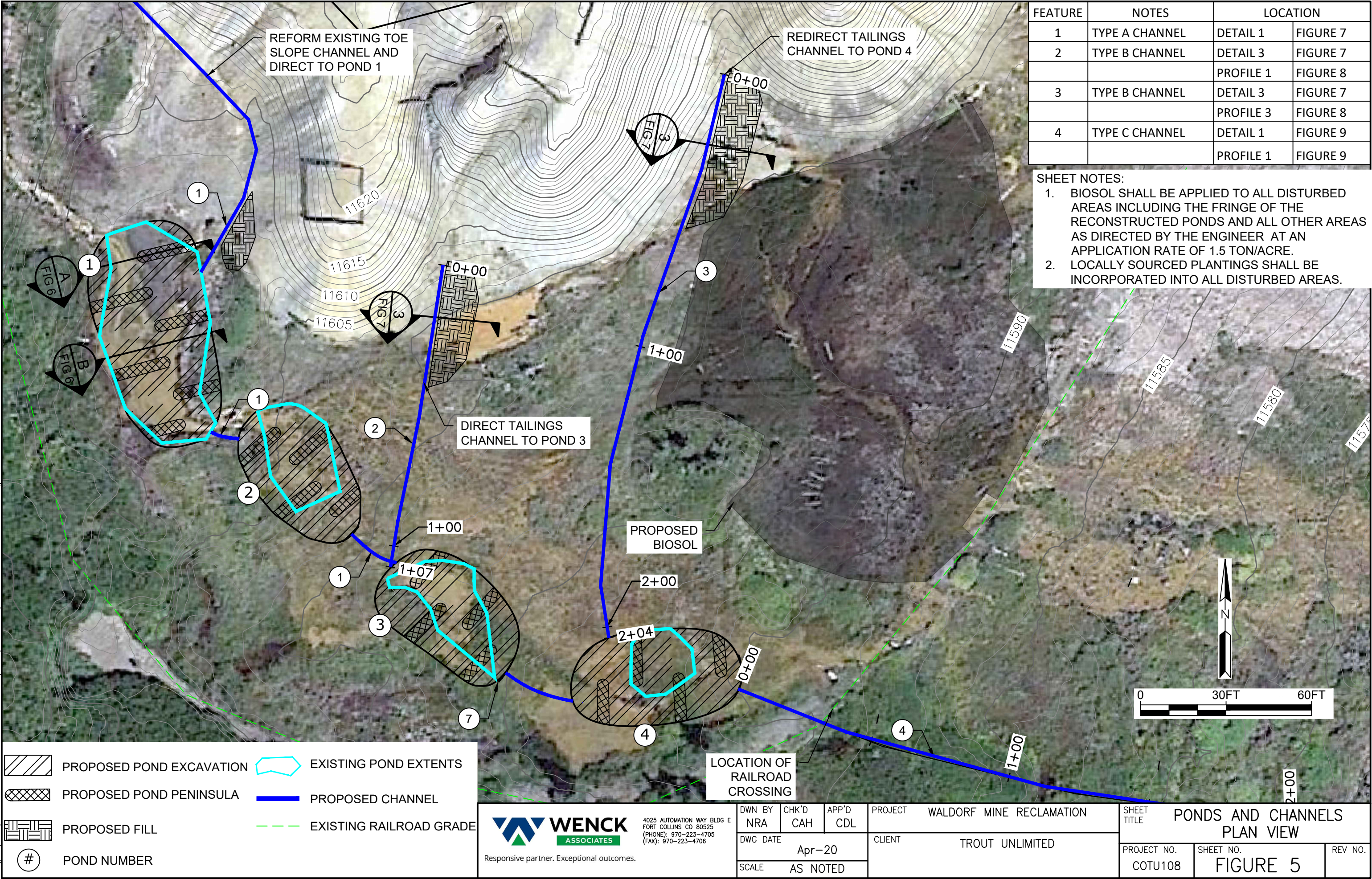


- |  |                          |  |                         |
|--|--------------------------|--|-------------------------|
|  | PROPOSED POND EXCAVATION |  | PROPERTY BOUNDARIES     |
|  | PROPOSED POND PENINSULA  |  | EXISTING POND EXTENTS   |
|  | BENTONITE AMENDED SOIL   |  | PROPOSED CHANNEL        |
|  | PROPOSED FILL            |  | EXISTING RAILROAD GRADE |
|  | POND NUMBER              |  |                         |

 Responsive partner. Exceptional outcomes.	4025 AUTOMATION WAY BLDG E FORT COLLINS CO 80525 (PHONE): 970-223-4705 (FAX): 970-223-4706	DWN BY NRA	CHK'D CAH	APP'D CDL	PROJECT WALDORF MINE RECLAMATION	SHEET TITLE SURVEY MAP		
		DWG DATE Mar-20		CLIENT TROUT UNLIMITED	PROJECT NO. COTU108	SHEET NO. FIGURE 3	REV NO.	
		SCALE AS NOTED						



12:15 PM  
Plot Date & Time: 9 April 2020  
Z:\project\COTU108 Waldorf B5572-0108\CAD\FIGURES\WALDORF RESTORATION.dwg

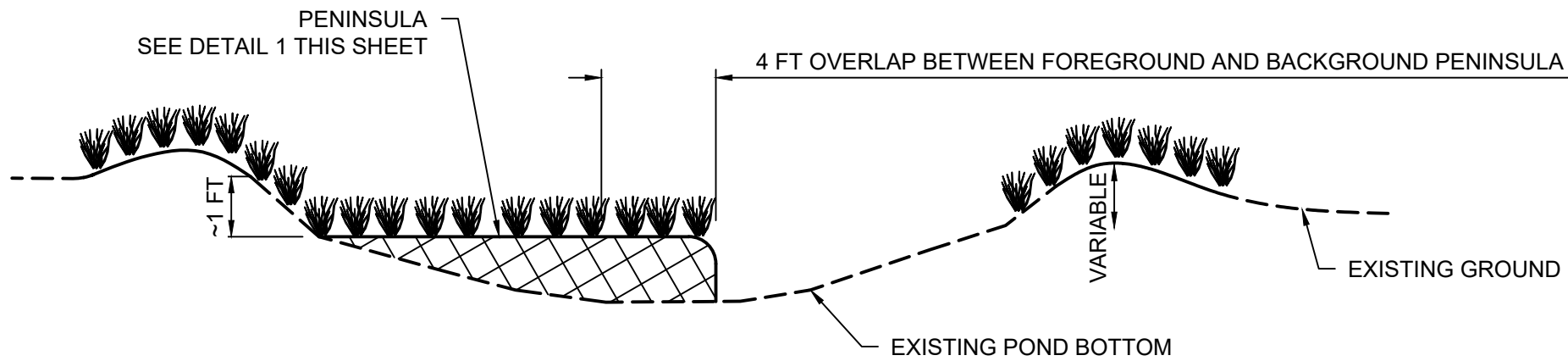


FEATURE	NOTES	LOCATION	
1	TYPE A CHANNEL	DETAIL 1	FIGURE 7
2	TYPE B CHANNEL	DETAIL 3	FIGURE 7
		PROFILE 1	FIGURE 8
3	TYPE B CHANNEL	DETAIL 3	FIGURE 7
		PROFILE 3	FIGURE 8
4	TYPE C CHANNEL	DETAIL 1	FIGURE 9
		PROFILE 1	FIGURE 9

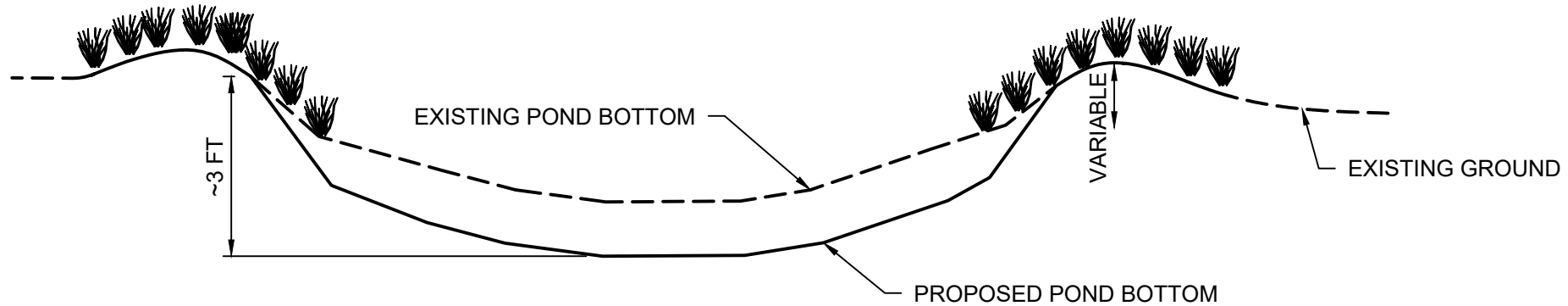
- SHEET NOTES:
- BIOSOL SHALL BE APPLIED TO ALL DISTURBED AREAS INCLUDING THE FRINGE OF THE RECONSTRUCTED PONDS AND ALL OTHER AREAS AS DIRECTED BY THE ENGINEER AT AN APPLICATION RATE OF 1.5 TON/ACRE.
  - LOCALLY SOURCED PLANTINGS SHALL BE INCORPORATED INTO ALL DISTURBED AREAS.




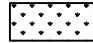

12:15 PM  
Plot Date & Time: 9 April 2020  
Z:\project\COTU108 Waldorf B5572-0108\CAD\FIGURES\WALDORF RESTORATION.dwg



**A** **TYPICAL FILL CROSS SECTION**  
NOT TO SCALE



**B** **TYPICAL CUT CROSS SECTION**  
NOT TO SCALE

-   **LOCALLY SOURCED PLANTINGS**  
 **POND PENINSULA**

**WENCK ASSOCIATES**  
4025 AUTOMATION WAY BLDG E  
FORT COLLINS CO 80525  
(PHONE): 970-223-4705  
(FAX): 970-223-4706  
Responsive partner. Exceptional outcomes.

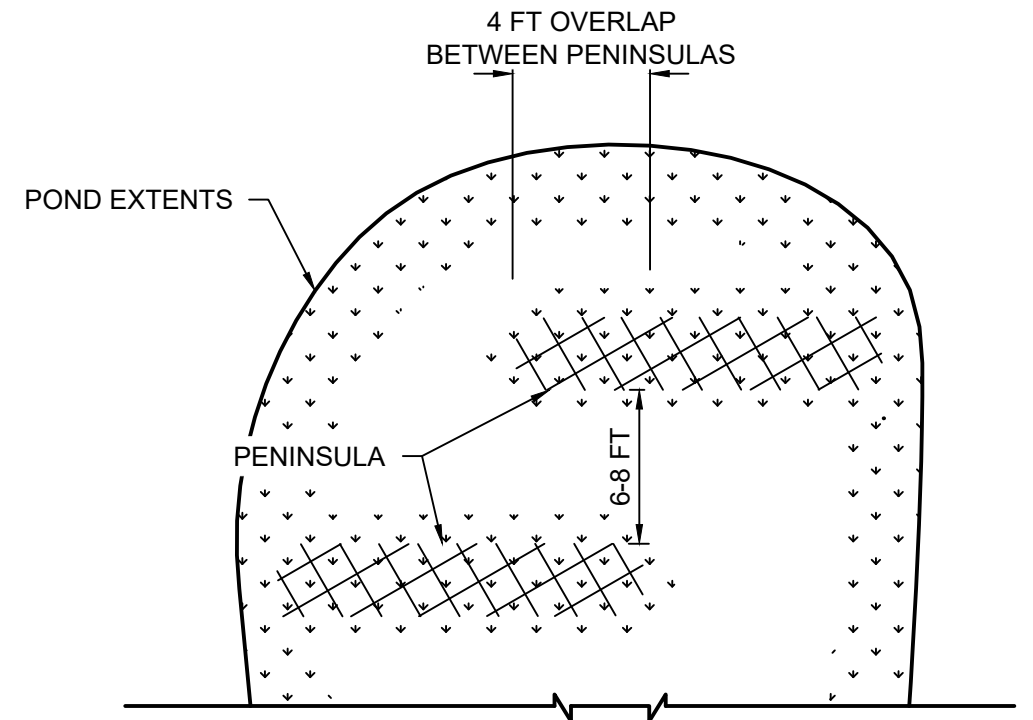
DWN BY	CHK'D	APP'D
NRA	CAH	CDL
DWG DATE Apr-20		
SCALE NOT TO SCALE		

PROJECT	WALDORF MINE RECLAMATION
CLIENT	TROUT UNLIMITED

SHEET TITLE POND DETAILS	
PROJECT NO. COTU108	SHEET NO. FIGURE 6
REV NO.	

**SHEET NOTES:**

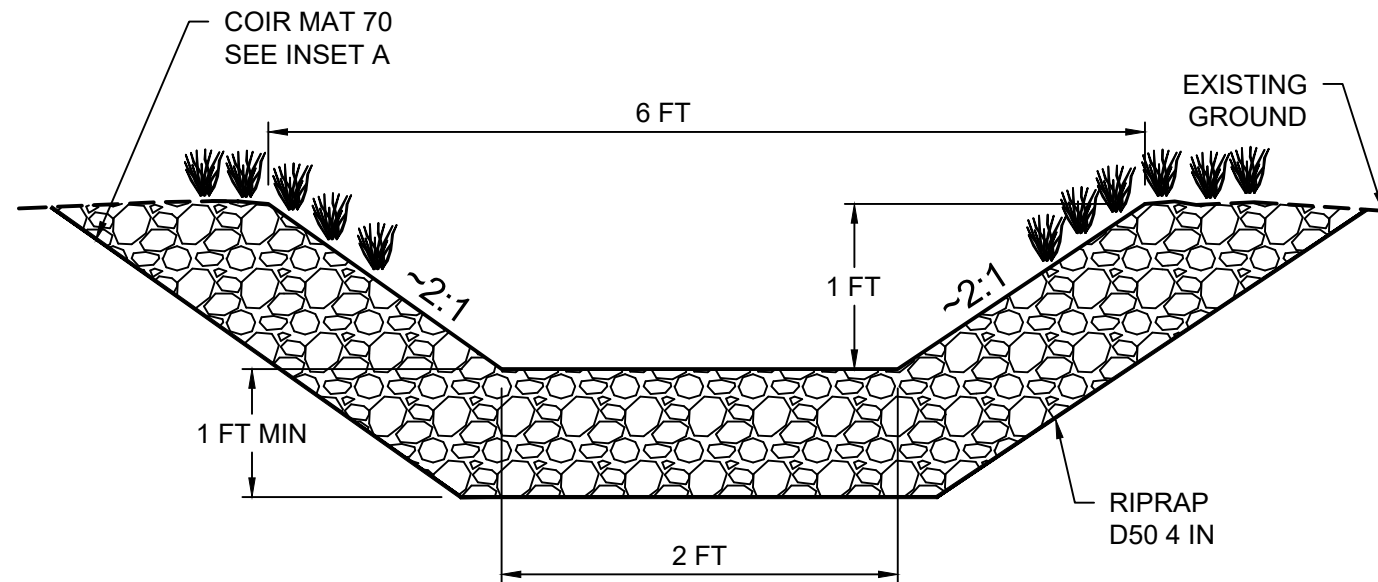
1. FIELD CONDITIONS WILL DICTATE PENINSULA CONSTRUCTABILITY, DIMENSIONS AND PLACEMENT.
2. IN THE EVENT THAT TAILINGS ARE ENCOUNTERED IN EXCAVATION, SUCH EXCAVATION SHALL CEASE AND CONSTRUCTION OF PENINSULAS AND POND DEEPENING WILL BE FIELD ADJUSTED.



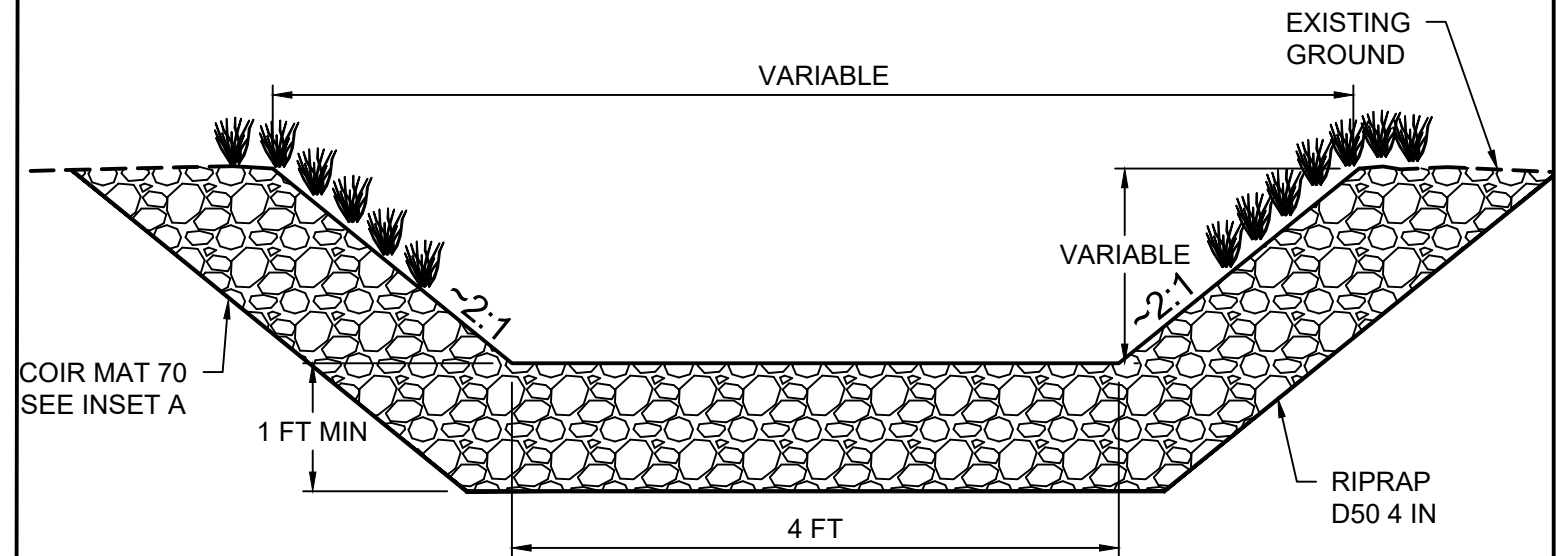
**1** **TYPICAL POND PLAN VIEW**  
NOT TO SCALE



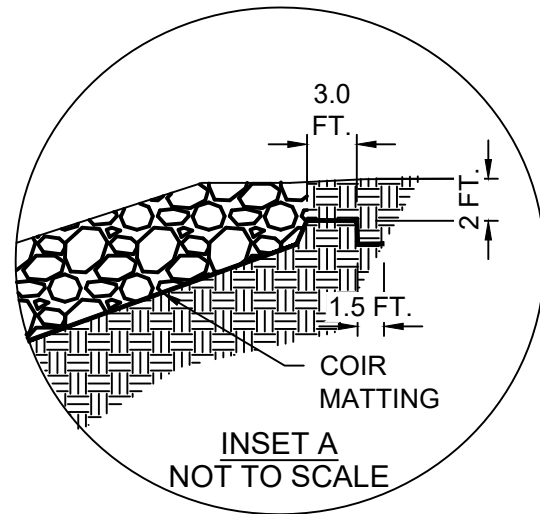
12:15 PM  
Plot Date & Time: 9 April 2020  
Z:\project\COTU108 Waldorf B5572-0108\CAD\FIGURES\WALDORF RESTORATION.dwg



1 TYPICAL TYPE A CHANNEL  
NOT TO SCALE (FIGURE 5)



2 TYPICAL TYPE B CHANNEL  
NOT TO SCALE (FIGURE 5)



INSET A  
NOT TO SCALE

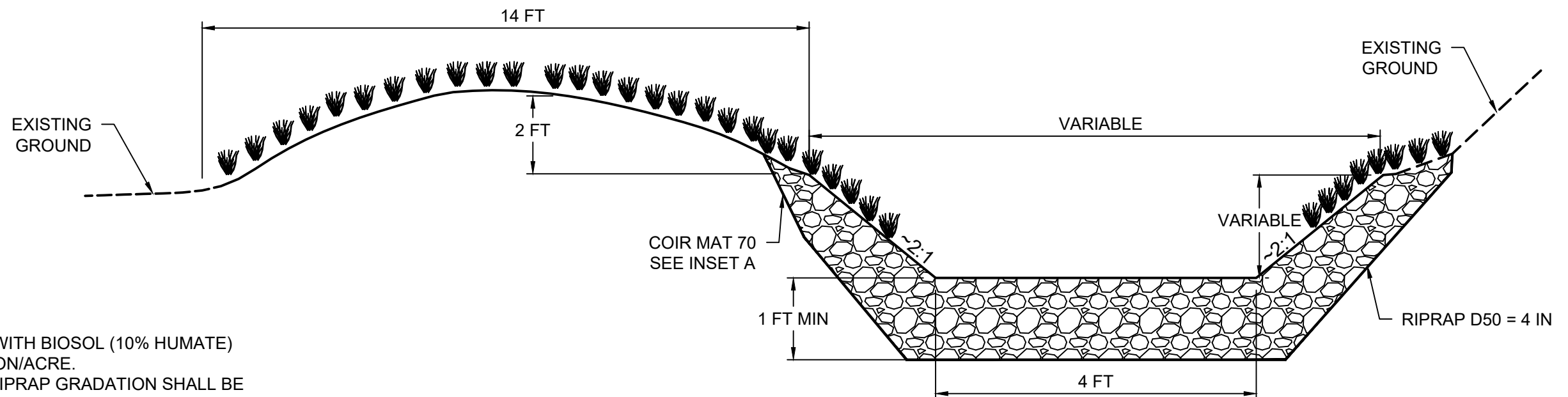
SHEET NOTES:

- CHANNEL BANKS SHALL BE LINED WITH BIOSOL (10% HUMATE) AT AN APPLICATION RATE OF 1.5 TON/ACRE.
- IF RIPRAP IS LOCALLY SOURCED, RIPRAP GRADATION SHALL BE ESTABLISHED.

D10 = 1 IN D75 = 6 IN  
D50 = 4 IN D100 = 8 IN

LEGEND

 LOCALLY SOURCED PLANTINGS



3 TYPICAL TYPE B CHANNEL BERM  
NOT TO SCALE (FIGURE 5)



Responsive partner. Exceptional outcomes.

4025 AUTOMATION WAY BLDG E  
FORT COLLINS CO 80525  
(PHONE): 970-223-4705  
(FAX): 970-223-4706

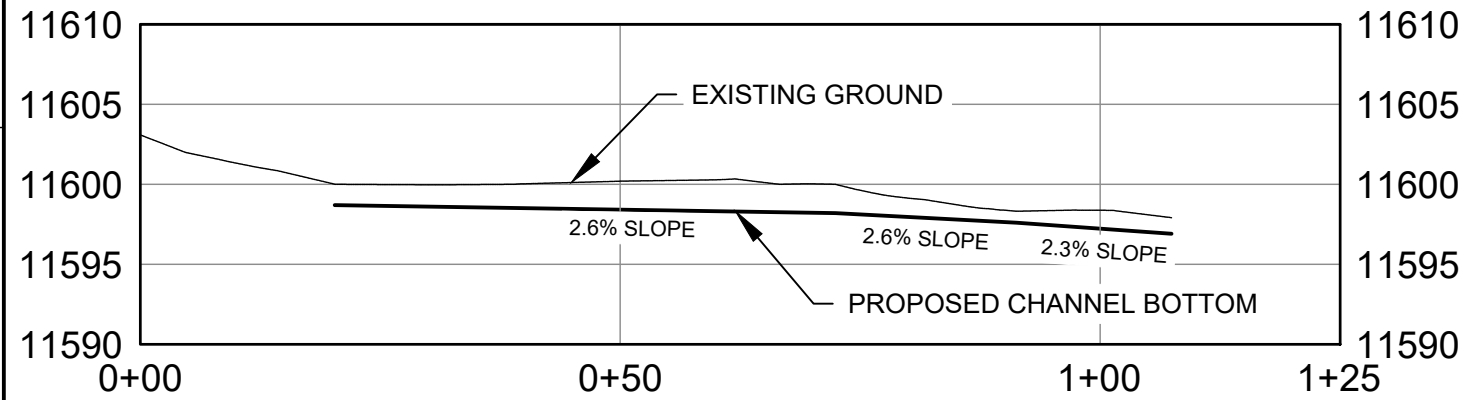
DWN BY	NRA	CHK'D	CAH	APP'D	CDL
DWG DATE	Apr-20				
SCALE	NOT TO SCALE				

PROJECT	WALDORF MINE RECLAMATION
CLIENT	TROUT UNLIMITED

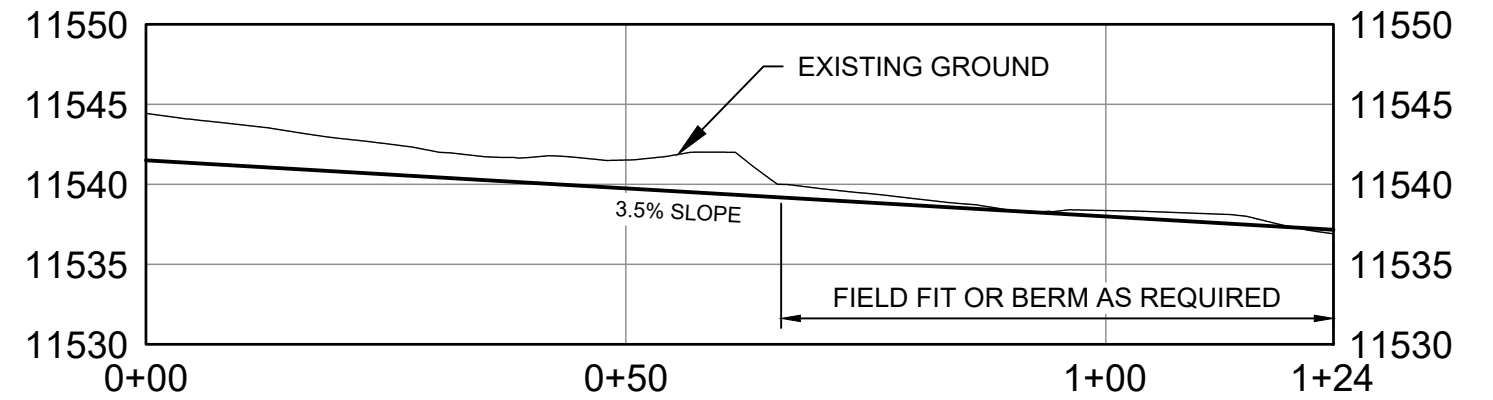
SHEET TITLE	TYPE A AND B CHANNELS		
PROJECT NO.	COTU108	SHEET NO.	FIGURE 7
REV NO.			



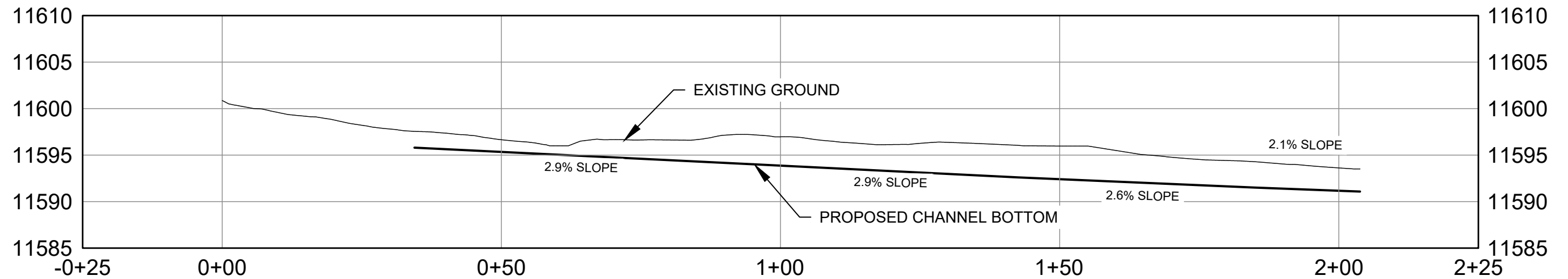
12:16 PM  
Plot Date & Time: 9 April 2020  
Z:\project\COTU108 Waldorf B5572-0108\CAD\FIGURES\WALDORF RESTORATION.dwg




1 CHANNEL PROFILE  
TO POND 3 (FIGURE 5)



2 CHANNEL PROFILE  
TO EXISTING ROCK LINED CHANNEL (FIGURE 2)

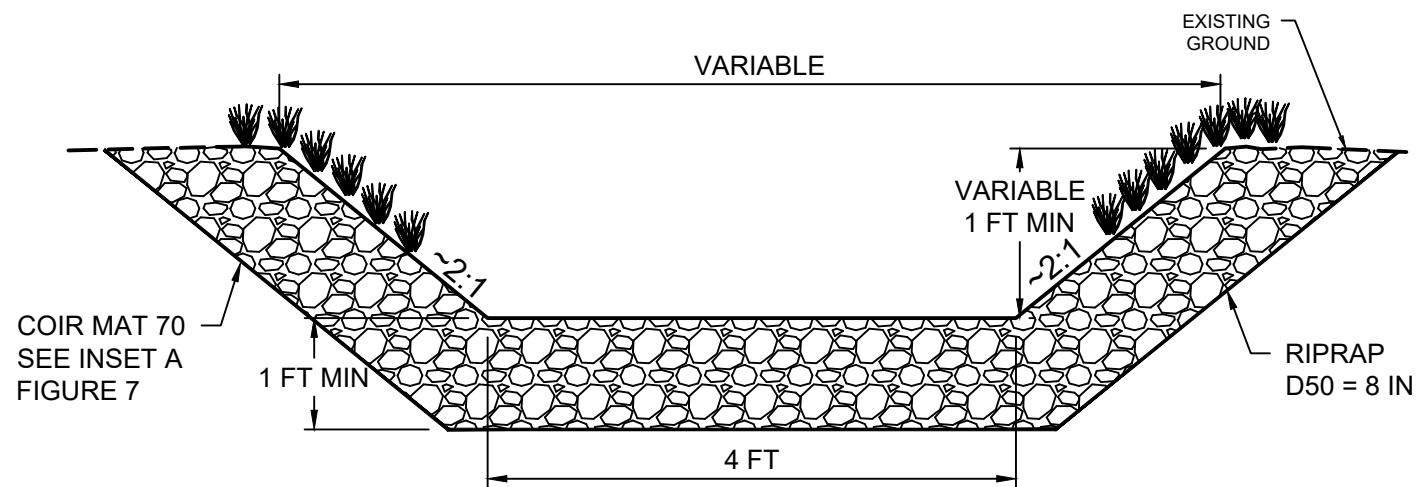


3 CHANNEL PROFILE  
TO POND 4 (FIGURE 5)

 Responsive partner. Exceptional outcomes.	4025 AUTOMATION WAY BLDG E FORT COLLINS CO 80525 (PHONE): 970-223-4705 (FAX): 970-223-4706			DWN BY NRA	CHK'D CAH	APP'D CDL	PROJECT WALDORF MINE RECLAMATION	SHEET TITLE CHANNEL PROFILES DETAILS		
	DWG DATE Apr-20			CLIENT TROUT UNLIMITED			PROJECT NO. COTU108		SHEET NO. FIGURE 8	REV NO.
	SCALE NOT TO SCALE									



9:38 AM  
12 May 2020  
Z:\project\COTU108 Waldorf B5572-0108\CAD\FIGURES\WALDORF RESTORATION.dwg

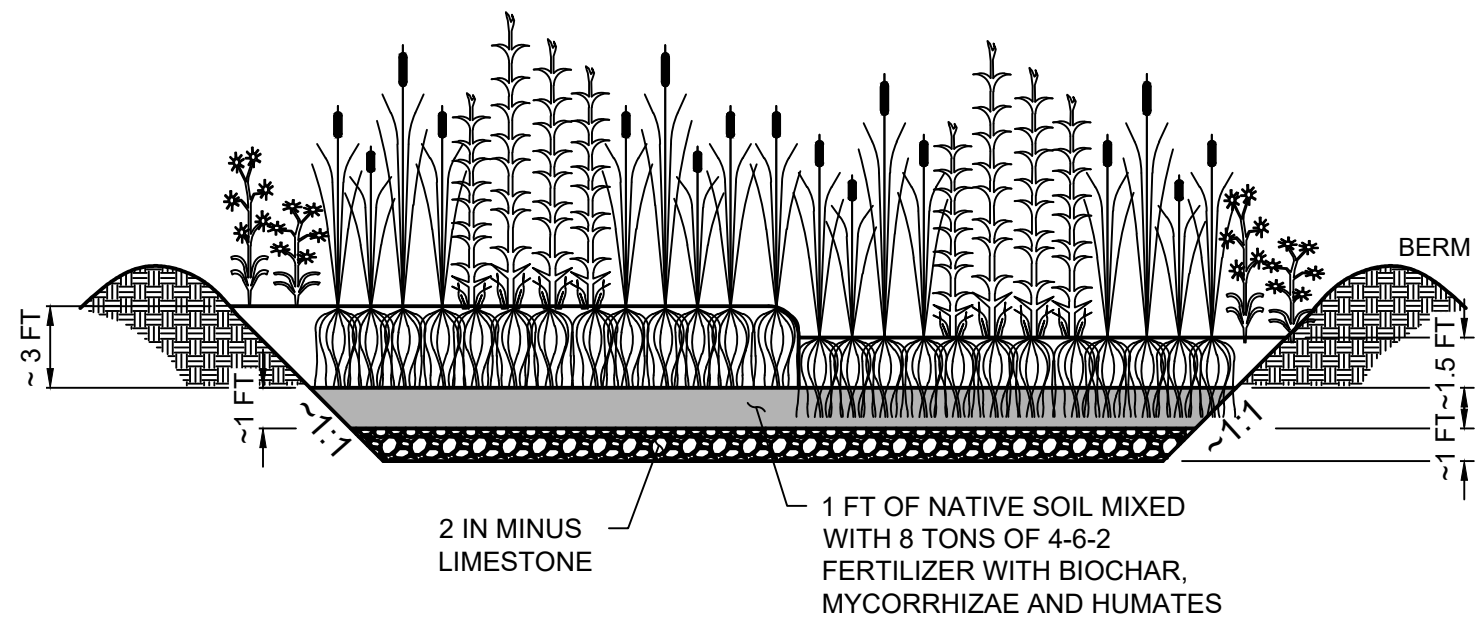


SHEET NOTES:

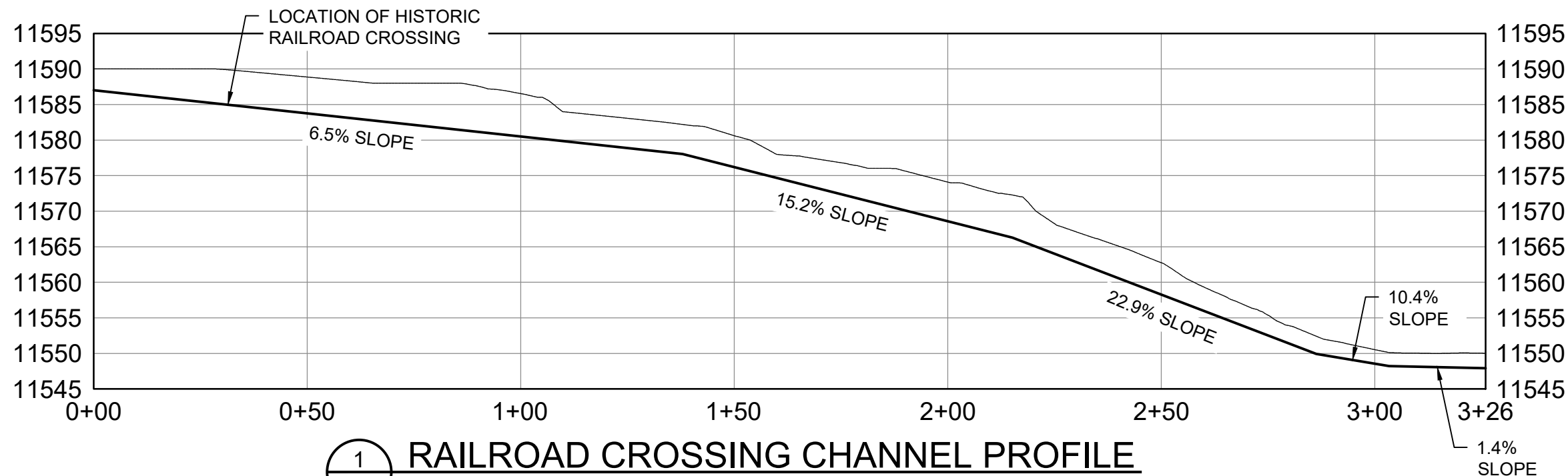
1. IF RIPRAP IS LOCALLY SOURCED, RIPRAP GRADATION SHALL BE ESTABLISHED.

D10 = 3 IN D75 = 12 IN  
D50 = 8 IN D100 = 16 IN

1 TYPE C CHANNEL  
NOT TO SCALE (FIGURE 2 AND 5)



2 PASSIVE WATER MANAGEMENT SYSTEM  
NOT TO SCALE (FIGURE 2)



1 RAILROAD CROSSING CHANNEL PROFILE  
TO POND 5 (FIGURE 2 AND 5)



Responsive partner. Exceptional outcomes.

4025 AUTOMATION WAY BLDG E  
FORT COLLINS CO 80525  
(PHONE): 970-223-4705  
(FAX): 970-223-4706

DWN BY	NRA	CHK'D	CAH	APP'D	CDL
DWG DATE	May-20				
SCALE	NOT TO SCALE				

PROJECT	WALDORF MINE RECLAMATION
CLIENT	TROUT UNLIMITED

SHEET TITLE	RAILROAD CHANNEL PROFILE AND CONSTRUCTED WETLAND DETAIL		
PROJECT NO.	COTU108	SHEET NO.	FIGURE 9
REV NO.			